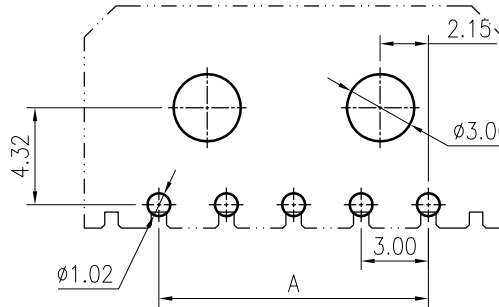
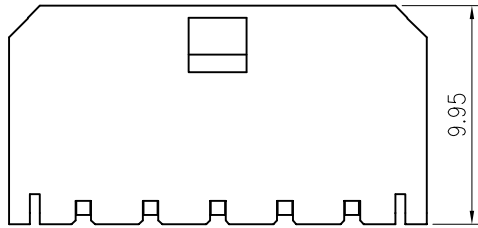
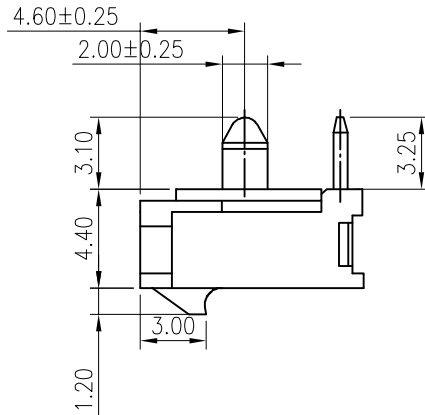
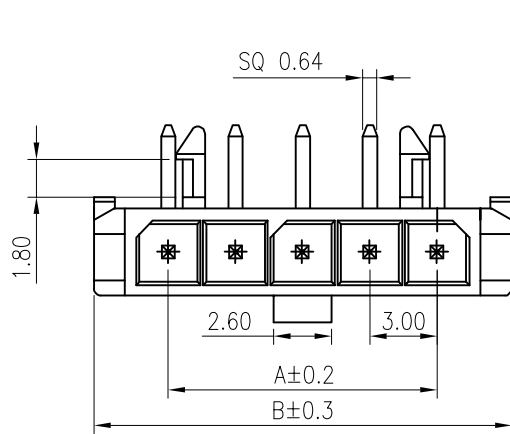


**RoHS**  
COMPLIANT



Recommended P.C.B. Layout  
Total tolerance: ±0.05mm

**SPECIFICATIONS**

1. Current rating: 5A AC, DC
2. Voltage rating: 250V AC,DC
3. Temperature range: -40°C ~ +105°C
4. Insulation resistance: 1000MΩ Min.
5. Withstanding voltage: 1500V AC/ minute.
6. Contact resistance: 10mΩ Max.

**Material:**

Insulator: PA9T UL 94V-0  
Contact: Brass  
Plating: Tin plated over nickel  
Circuits: 2~12  
Mate with KR3000 series single row housing

**Ordering Code:**

**AA** C3000RD \*\*\* \*\* T0101 R A

No. of Circuits: 102:2P, 103:3P.....  
Insulator Material: 11:PA9T Natural, 12:PA9T Black  
Packing: R: Reel Tape, P: Bag

PIN NO.	DIMENSIONS	
	A	B
2P	3.00	9.65
3P	6.00	12.65
4P	9.00	15.65
5P	12.00	18.65
6P	15.00	21.65
7P	18.00	24.65
8P	21.00	27.65
9P	24.00	30.65
10P	27.00	33.65
11P	30.00	36.65
12P	33.00	39.65

F	<b>AA</b>				<b>TOLERANCE</b>	<b>TITLE:</b>	<b>DRAWN:</b> ru yi 2020.03.10	<b>KONNRA</b> 东莞市康瑞电子有限公司 DongGuan Konnra Electronics Co., Ltd.		
	<b>A3</b>	Uniformly arrange the drawings	Arvin	2021.09.18	X. X ±0.30	MX3.0 DIP 90° Wafer Single Row	<b>CHECKED:</b>			
	<b>A2</b>	Change the part number and frame format	Ru yi	2020.3.10	X. XX ±0.20		<b>APPROVED:</b>	<b>PART NO.:</b> C3000RD***12T0101*A		
	<b>MARK</b>	<b>REVISION DESCRIPTION</b>	<b>SIGNATURE</b>	<b>DATE</b>	X. XXX ±0.10	<b>UNIT:</b> mm	<b>SCALE:</b> N/A	<b>SHEET:</b> 1/1	<b>PROJECTION</b>	<b>REV.:</b> A3
	1	2	3	4	5	6	7	8	9	