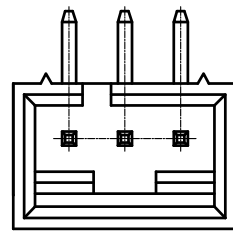
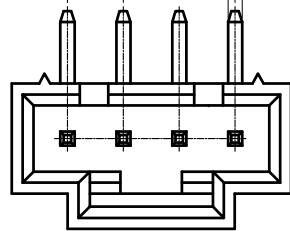
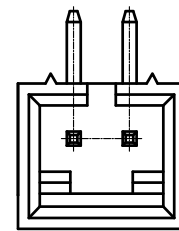


RoHS  
COMPLIANT

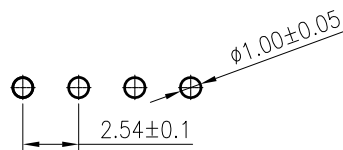
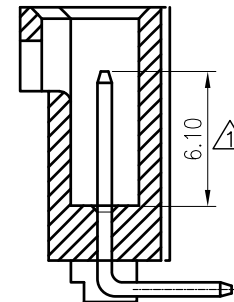
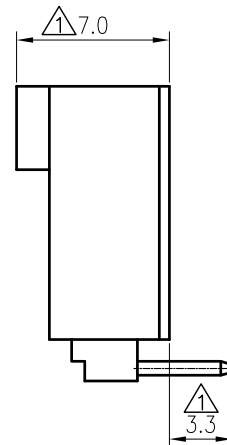
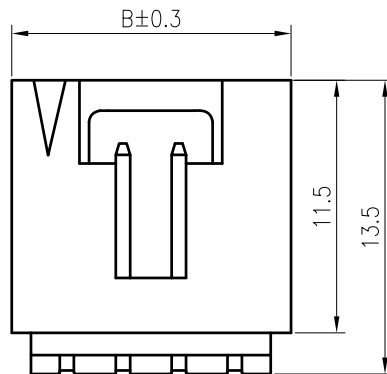
$A \pm 0.2$   
 $2.54 \pm 0.1$   $0.64 \pm 0.05$



△ 3P



2P



Recommended P.C.Board Layout

**SPECIFICATIONS**

1. Current rating: 3A AC, DC
2. Voltage rating: 250V AC,DC
3. Temperature range: -40°C ~ +105°C
4. Insulation resistance: 1000MΩ Min.
5. Withstanding voltage: 1500V AC/ minute.
6. Contact resistance: 20mΩ Max.

**Material:**

Insulator: PA66 UL 94V-0

Contact: Brass

Plating: Gold flash plated over Nickel

Mate with KR2541 series Housing

Ordering Code:

C2541RD \*\*\* 02 G01 01 PA

└─ No.of Circuits  
102:2,120:20 △ A3

| Circuits | Dimensions |       | Circuits | Dimensions |       |
|----------|------------|-------|----------|------------|-------|
|          | A          | B     |          | A          | B     |
| 2        | 2.54       | 7.62  | 12       | 27.94      | 33.02 |
| 3        | 5.08       | 10.16 | 13       | 30.48      | 35.56 |
| 4        | 7.62       | 12.70 | 14       | 33.02      | 38.10 |
| 5        | 10.16      | 15.24 | 15       | 35.56      | 40.64 |
| 6        | 12.70      | 17.78 | 16       | 38.10      | 43.18 |
| 7        | 15.24      | 20.32 | 17       | 40.64      | 45.72 |
| 8        | 17.78      | 22.86 | 18       | 43.18      | 48.26 |
| 9        | 20.32      | 25.40 | 19       | 45.72      | 50.80 |
| 10       | 22.86      | 27.94 | 20       | 48.26      | 53.34 |
| 11       | 25.40      | 30.48 |          |            |       |

**TOLERANCE**

X.X ±0.30  
X.XX ±0.20  
X.XXX ±0.10  
Angle ±2°

**TITLE:**  
MX2.54 DIP 90°  
Ultra-thin Wafer

**DRAWN:** Shen 2022.01.13

**CHECKED:**

**APPROVED:**

**KONNRA** 东莞市康瑞电子有限公司

DongGuan Konnra Electronics Co.,Ltd.

PART NO.: C2541RD\*\*\*02G0101PA

MARK

REVISION DESCRIPTION

SIGNATURE

DATE

UNIT:mm

SCALE:N/A

SHEET:1/1

PROJECTION

REV.:A4

DRAWING NO.:2541WRD101-A-S