

RoHS
COMPLIANT

SPECIFICATIONS

1. Current rating: 3A AC, DC
2. Voltage rating: 250V AC, DC
3. Temperature range: -40°C ~ +105°C
4. Insulation resistance: 1000MΩ/ min.
5. Withstanding voltage: 1000V AC/ minute.
6. Contact resistance: 20mΩ/ max.

Material:

Insulator: PA66 UL94 V-2 or v-0

Contact: Brass

Plating: Tin plated over Nickel

Mate with KR2502 series Housing

Ordering Code:

C2502VD xxx 01 T01 01PB

No. of Circuits

102:02, 116:16

Insulator Material

03:PA66 White V2

20:PA66 Red V0

21:PA66 Blue V0

22:PA66 Beige V0

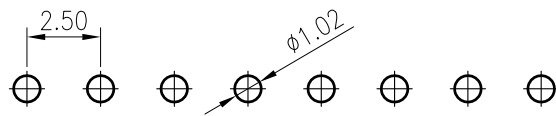
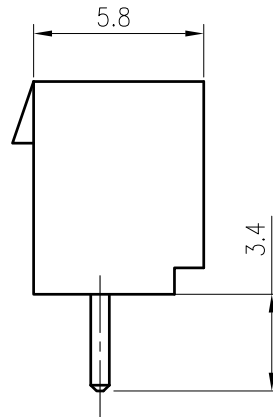
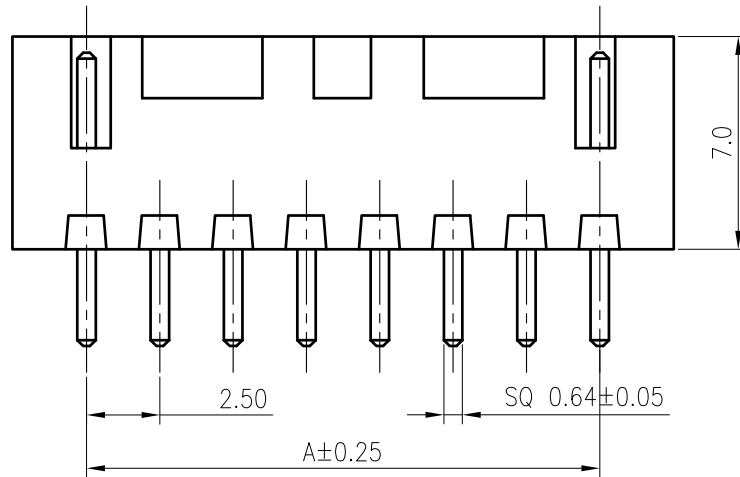
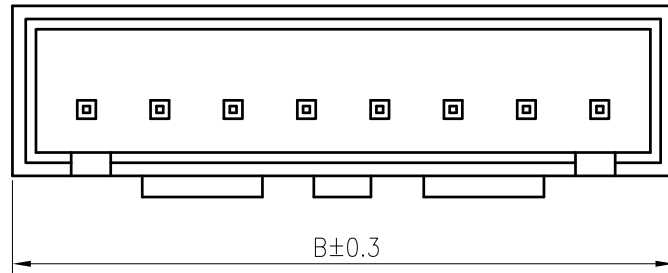
31:PA66 Green V0

38:PA66 Blue V2

45:PA66 Yellow V2

Plating

T01: Tin plated



Recommended P.C.B. Layout
Total tolerance: ±0.05mm

Circuits	Dimensions		Circuits	Dimensions	
	A	B		A	B
2	2.50	7.50	12	27.50	32.50
3	5.00	10.00	13	30.00	35.00
4	7.50	12.50	14	32.50	37.50
5	10.00	15.00	15	35.00	40.00
6	12.50	17.50	16	37.50	42.50
7	15.00	20.00	17	40.00	45.00
8	17.50	22.50	18	42.50	47.50
9	20.00	25.00	19	45.00	50.00
10	22.50	27.50	20	47.50	52.50
11	25.00	30.00			

TOLERANCE
X.X ±0.30
X.XX ±0.20
X.XXX ±0.10
Angle ±2°

TITLE:
XH2.5 Have buckle
DIP 180° Wafer

DRAWN: *Arwin 2020.05.29*

CHECKED:

APPROVED:

KONNRA 东莞市康瑞电子有限公司
DongGuan Konnra Electronics Co.,Ltd.

PART NO.: C2502VDxxxxxT0101PB



Uniformly arrange the drawings

SIGNATURE ZSZ

DATE 2021.12.27

MARK

REVISION DESCRIPTION

SIGNATURE

DATE

UNIT:mm

SCALE:N/A

SHEET:1/1

PROJECTION

REV.:A5

DRAWING NO.:2502WVD101-B-S